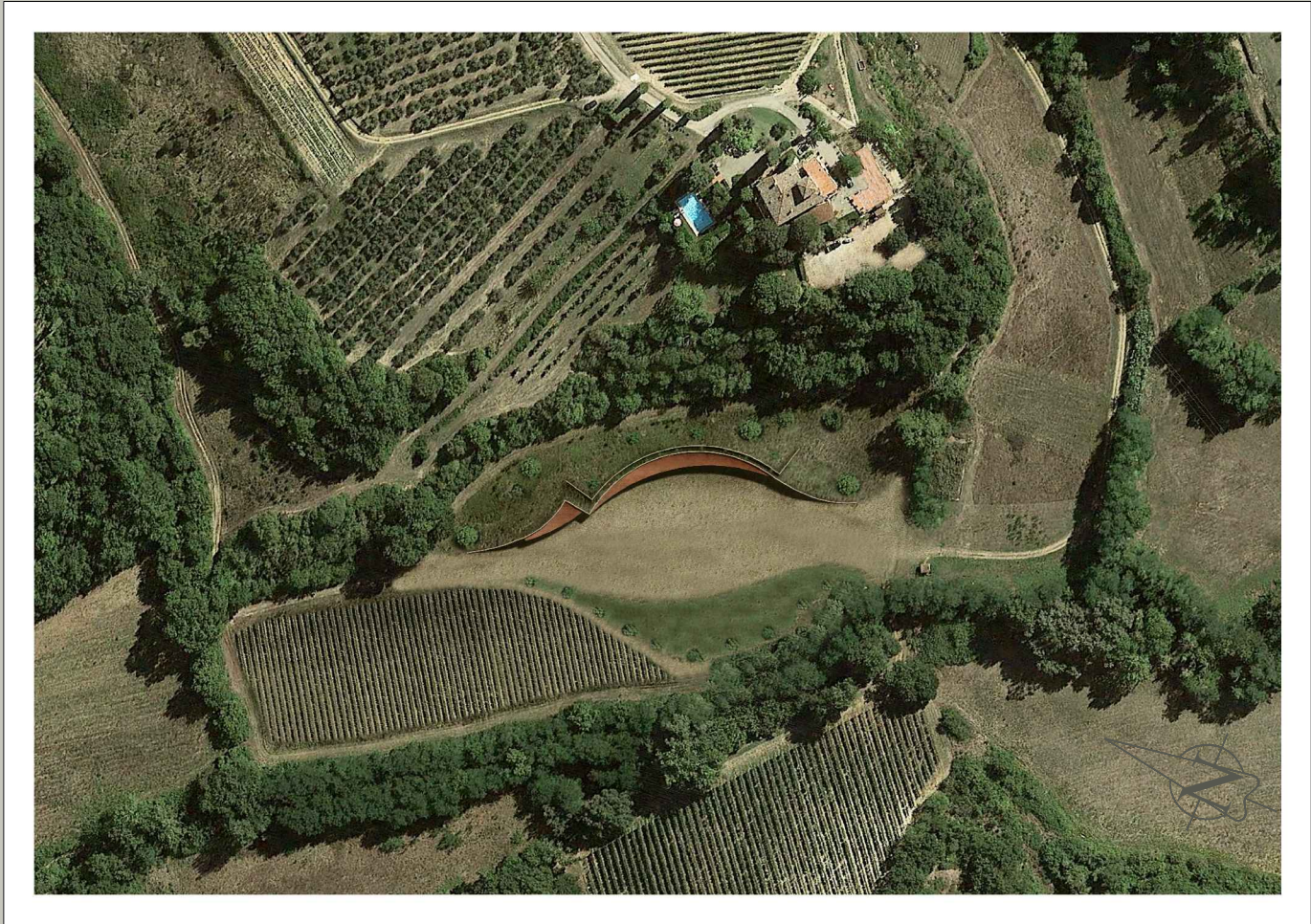


COMUNE DI TAVARNELLE VAL DI PESA  
CITTA' METROPOLITANA DI FIRENZE

Azienda Agricola "POGGIO ROZZI" loc. Romita, Via Romita n° 29



Richiedente:"Azienda Agricola Poggio Rozzi di Eberhard Toggenburg"

Proprietario:dott. Ulrich Toggenburg

dott.agr. Michele Lotti Margotti

geom. Luca Anichin

dott. ing. Daniele Lapi

dott.geol. Maria Angela Botta

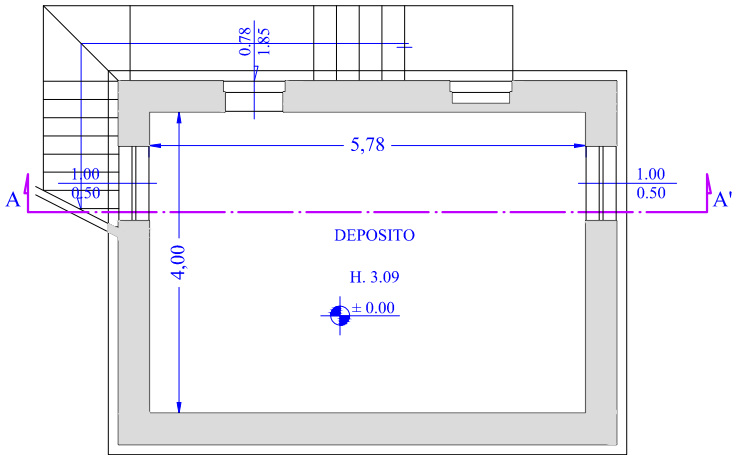
PIANTE, SEZIONI, CALCOLO VOLUME E SUP. UTILE

STATO ATTUALE

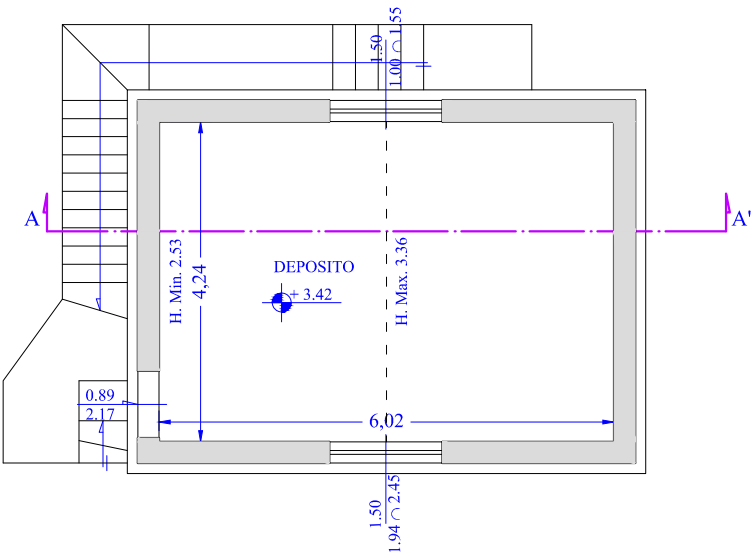
TAV.  
13.D  
DICEMBRE '16

scala 1:100

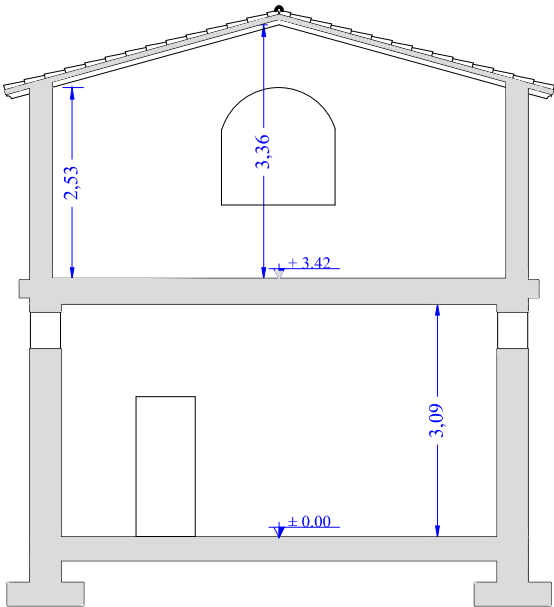
PIANO SEMINTERRATO  
scala 1:100



PIANO TERRENO  
scala 1:100



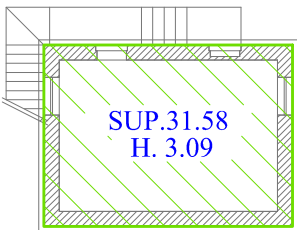
SEZIONE A-A'  
scala 1:100



CALCOLO VOLUME

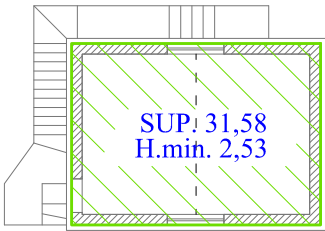
CALCOLO VOLUME COME DA PAPMAA

PIANO SEMINTERRATO  
scala 1:200



SUP. UTILE PIANO SEMINT. =23,12 mq  
SUP. COPERTA PIANO SEMINT. =31,58 mq  
VOLUME = SUP,COPERTA X H.+0,30=  
= 31.58 x (3.09 +0,30) =  
107,06 mc

PIANO TERRENO  
scala 1:200



SUP. UTILE PIANO TERRENO =25,52 mq  
SUP. COPERTA PIANO TERRENO =31,58 mq  
VOLUME = SUP,COPERTA X H.=  
= 31.58 x 2,53=  
79,90 mc

VOLUME TOTALE=186.96 mc